

HYUNDAI Accent 2018







Crash testing for safety

Overall Score	35.66	out of	37
Frontal offset test	14.66	out of	16
Side impact test	16	out of	16
Pole test (Optional)	2	out of	2
Bonus Points	3	out of	3

The tested model of Hyundai Accent was introduced in Australia in August 2011. This ANCAP rating applies to all Accent sedan and hatch variants. The Accent scored 14.66 out of 16 in the offset crash test. The passenger compartment held its shape well. There was a slight risk of serious leg injury for the driver and front passenger. There was a slight risk of serious chest injury for the driver.

The vehicle scored 16 out of 16 in the side impact crash test and a further 2 points in the pole test.

Safety Feature Summary

The safety feature information below is subject to change without notice. For up to date safety feature specifications for all variants, please see the safety feature table to the right or contact the manufacturer.

Dual front airbags, side airbags and head-protecting side curtains are standard equipment. Antilock brakes (ABS), electronic brake distribution (EBD) and electronic stability control (ESC) are also standard. Advanced seat belt reminders are fitted to all seats.

Pretensioners are fitted to the front seat belts to reduce slack in the event of a crash. A three point seat belt is fitted to the centre rear seat. This provides better protection than a two point (lap) seat belt.

Base Model Safety Features

Forward Collision Warning	?
Higher Speed AEB	?
Low Speed Auto Emergency Braking	?
Pedestrian Auto Emergency Braking	?
Electronic Stability Control	✓
Driver Attention Detection	?
Front Side Curtain Airbags	✓
Rear Side Curtain Airbags	✓
Active Cruise Control	?
Warning - Driver Fatigue	?
Car Safety feature - Traction Control	✓
Adjustable Steering Column	✓
Daytime Running Lights	?
Front Airbags Driver	✓
Front Airbags Passenger	✓
Seatbelt Pretensioner Driver	✓
Seatbelt Pretensioner Passenger	✓

Legend

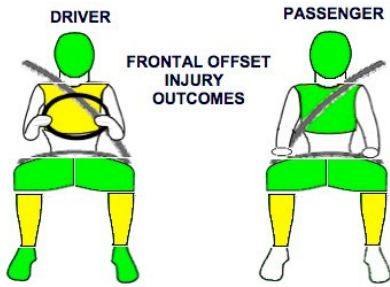
- ✓ Standard ✗ Not Available
- Ⓢ Optional ? No Information

Green Vehicle Guide

Overall Rating	
Combined Fuel Consumption	6.3 L/100km
CO2 Combined	146 g/km
Greenhouse Rating	/10
Air Pollution Rating	/10

HYUNDAI Accent 2018

Frontal Offset Test Results



Frontal Offset*	14.66 pts	(out of 16)
Head/neck	4 pts	
Chest	3.46 pts	
Upper Legs	4 pts	
Lower Legs	3.2 pts	

*Body region scores out of 4 points each

The passenger compartment held its shape well in the offset crash test. The brake pedal moved rearwards by 61mm. The throttle pedal moved downwards 5mm. The steering wheel hub moved 40mm forward, 31mm upward and 5mm sideways. The front ("A") pillar moved 17mm rearwards. All doors remained closed during the crash. After the crash all doors could be opened with normal effort.

The airbag cushioned the head of the driver and contact was stable. There were no knee hazards. The passenger's head was cushioned by the airbag.

Whiplash Protection Test

The Accent achieved a GOOD whiplash protection rating.

Side Impact Test Results



Side Impact*	16 pts	(out of 16)
Head	4 pts	
Chest	4 pts	
Abdomen	4 pts	
Pelvis	4 pts	

*Body region scores out of 4 points each

The vehicle scored the maximum two points in the pole test.

Whiplash



GOOD
ACCEPTABLE
MARGINAL
POOR